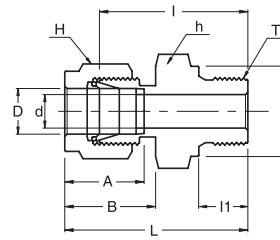


# SGMC

Male Connector  
For Bonded Washer Seal



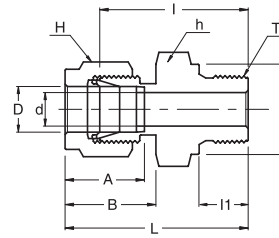
## Connects Fractional Tube To Female ISO Parallel Thread

Part No.	Tube OD D (inch)	T G (PF)	d Min	Width Across Flat		A	B	I	I1	L	K
				h (inch)	H (inch)						
SGMC - 1 - 2G	1/16	1/8	1.27	9/16	5/16	8.63	10.92	21.6	8	25.63	13.8
SGMC - 2 - G	1/8	1/8	2.28	9/16	7/16	12.70	15.24	23.2	8	29.81	13.8
SGMC - 2 - 4G	1/8	1/4	2.28	3/4	7/16	12.70	15.24	28.5	12	35.11	17.8
SGMC - 2 - 6G	1/8	3/8	2.28	7/8	7/16	12.70	15.24	29.9	12	36.51	21.8
SGMC - 3 - 2G	3/16	1/8	3.05	9/16	1/2	13.71	16.00	23.9	8	30.50	13.8
SGMC - 3 - 8G	3/16	1/2	3.05	1-1/16	1/2	13.71	16.00	36.3	14	42.90	25.8
SGMC - 4 - 2G	1/4	1/8	4.40	9/16	9/16	15.24	17.78	24.9	8	32.20	13.8
SGMC - 4 - 4G	1/4	1/4	4.83	3/4	9/16	15.24	17.78	30.1	12	37.40	17.8
SGMC - 4 - 6G	1/4	3/8	4.83	7/8	9/16	15.24	17.78	31.5	12	38.80	21.8
SGMC - 4 - 8G	1/4	1/2	4.83	1-1/16	9/16	15.24	17.78	35.9	14	43.20	25.8
SGMC - 5 - 2G	5/16	1/8	4.40	9/16	5/8	16.25	18.54	25.8	8	33.16	13.8
SGMC - 5 - 4G	5/16	1/4	6.35	3/4	5/8	16.25	18.54	31.0	12	38.36	17.8
SGMC - 5 - 6G	5/16	3/8	6.35	7/8	5/8	16.25	18.54	32.3	12	39.66	21.8
SGMC - 5 - 8G	5/16	1/2	6.35	1-1/16	5/8	16.25	18.54	38.2	14	45.56	25.8
SGMC - 6 - 2G	3/8	1/8	4.40	5/8	11/16	16.76	19.30	26.9	8	34.27	13.8
SGMC - 6 - 4G	3/8	1/4	7.11	3/4	11/16	16.76	19.30	31.8	12	39.17	17.8
SGMC - 6 - 6G	3/8	3/8	7.11	7/8	11/16	16.76	19.30	33.0	12	40.37	21.8
SGMC - 6 - 8G	3/8	1/2	7.11	1-1/16	11/16	16.76	19.30	38.9	14	46.27	25.8
SGMC - 6 - 12G	3/8	3/4	7.11	1-3/8	11/16	16.76	19.30	42.7	16	50.07	31.8
SGMC - 6 - 16G	3/8	1	7.11	1-5/8	11/16	16.76	19.30	45.5	18	52.87	38.8
SGMC - 8 - 2G	1/2	1/8	4.40	13/16	7/8	22.86	21.84	28.0	8	38.16	13.8
SGMC - 8 - 4G	1/2	1/4	7.50	13/16	7/8	22.86	21.84	32.5	12	42.66	17.8
SGMC - 8 - 6G	1/2	3/8	9.90	7/8	7/8	22.86	21.84	33.0	12	43.16	21.8
SGMC - 8 - 8G	1/2	1/2	10.41	1-1/16	7/8	22.86	21.84	38.9	14	49.06	25.8
SGMC - 8 - 12G	1/2	3/4	10.41	1-3/8	7/8	22.86	21.84	42.7	16	52.86	31.8
SGMC - 8 - 16G	1/2	1	10.41	1-5/8	7/8	22.86	21.84	45.5	18	55.66	38.8
SGMC - 8 - 20G	1/2	1-1/4	10.41	2-1/8	7/8	22.86	21.84	52.5	20	62.66	48.8
SGMC - 10 - 6G	5/8	3/8	9.90	1-1/16	1	24.38	21.84	36.2	12	46.36	21.8
SGMC - 10 - 8G	5/8	1/2	12.30	1-1/16	1	24.38	21.84	38.7	14	48.86	25.8
SGMC - 10 - 12G	5/8	3/4	12.70	1-3/8	1	24.38	21.84	42.5	16	52.66	31.8
SGMC - 12 - 4G	3/4	1/4	7.50	1-1/16	1-1/8	242.38	21.84	35.5	12	45.66	17.8
SGMC - 12 - 6G	3/4	3/8	9.90	1-1/16	1-1/8	242.38	21.84	36.0	12	46.16	21.8
SGMC - 12 - 8G	3/4	1/2	12.30	1-1/16	1-1/8	242.38	21.84	38.7	14	48.86	25.8
SGMC - 12 - 12G	3/4	3/4	15.50	1-3/8	1-1/8	242.38	21.84	42.5	16	52.66	31.8
SGMC - 12 - 16G	3/4	1	15.75	1-5/8	1-1/8	242.38	21.84	45.3	18	55.46	38.8
SGMC - 14 - 12G	7/8	3/4	15.50	1-3/8	1-1/4	25.90	21.84	42.5	16	52.66	31.8
SGMC - 14 - 16G	7/8	1	18.30	1-5/8	1-1/4	25.90	21.84	45.3	18	55.46	38.8
SGMC - 16 - 6G	1	3/8	9.90	1-3/8	1-1/2	31.24	26.41	41.0	12	53.19	21.8
SGMC - 16 - 8G	1	1/2	12.30	1-3/8	1-1/2	31.24	26.41	43.5	14	55.69	25.8
SGMC - 16 - 12G	1	3/4	15.50	1-3/8	1-1/2	31.24	26.41	45.5	16	57.69	31.8
SGMC - 16 - 16G	1	1	21.50	1-5/8	1-1/2	31.24	26.41	47.8	18	59.99	38.8
SGMC - 20 - 20G	1-1/4	1-1/4	27.50	2-1/8	1-7/8	41.15	38.86	57.4	20	79.50	48.8
SGMC - 24 - 16G	1-1/2	1	21.50	2-1/8	2-1/4	50.04	45.21	56.6	18	83.78	38.8
SGMC - 24 - 20G	1-1/2	1-1/4	27.50	2-1/8	2-1/4	50.04	45.21	58.6	20	85.78	48.8
SGMC - 24 - 24G	1-1/2	1-1/2	33.00	2-1/8	2-1/4	50.04	45.21	57.6	22	84.78	54.8

- Dimensions and Drawings are for reference only and are subject to change without prior notice.  
 - Unless otherwise specified, all dimensions are in millimeters.  
 - Sizes, pressure classes, and end connections not listed are available upon request.  
 - Dimensions shown with SUPERLOK nuts finger-tight, where applicable.

# SGMC

Male Connector  
For Bonded Washer Seal



## Connects Metric Tube To Female ISO Parallel Thread

Part No.	Tube OD D	T G (PF)	d Min	Width Across Flat		A	B	I	I1	L	K
				h	H						
SGMC - 3M - 2G	3	1/8	2.4	14	12	12.9	15.3	23.4	8.0	30.0	14.0
SGMC - 3M - 4G	3	1/4	2.4	19	12	12.9	15.3	28.7	12.0	35.3	18.0
SGMC - 4M - 2G	4	1/8	2.4	14	12	13.7	16.1	24.1	8.0	30.7	14.0
SGMC - 6M - 2G	6	1/8	4.0	14	14	15.3	17.7	24.9	8.0	32.3	14.0
SGMC - 6M - 4G	6	1/4	4.8	19	14	15.3	17.7	30.2	12.0	37.6	18.0
SGMC - 6M - 6G	6	3/8	4.8	22	14	15.3	17.7	31.5	12.0	38.9	22.0
SGMC - 6M - 8G	6	1/2	4.8	27	14	15.3	17.7	37.3	14.0	44.7	26.0
SGMC - 8M - 2G	8	1/8	4.0	15	16	16.2	18.6	25.7	8.0	33.2	14.0
SGMC - 8M - 4G	8	1/4	6.4	19	16	16.2	18.6	31.0	12.0	38.5	18.0
SGMC - 8M - 6G	8	3/8	6.4	22	16	16.2	18.6	32.3	12.0	39.8	22.0
SGMC - 8M - 8G	8	1/2	6.4	27	16	16.2	18.6	38.1	14.0	45.6	26.0
SGMC - 10M - 4G	10	1/4	5.9	19	19	17.2	19.5	31.8	12.0	39.4	18.0
SGMC - 10M - 6G	10	3/8	7.9	22	19	17.2	19.5	33.0	12.0	40.6	22.0
SGMC - 10M - 8G	10	1/2	7.9	27	19	17.2	19.5	38.9	14.0	46.5	26.0
SGMC - 12M - 4G	12	1/4	5.9	22	22	22.8	22.0	32.5	12.0	42.6	18.0
SGMC - 12M - 6G	12	3/8	7.9	22	22	22.8	22.0	33.0	12.0	43.1	22.0
SGMC - 12M - 8G	12	1/2	9.5	27	22	22.8	22.0	38.9	14.0	49.0	26.0
SGMC - 12M - 12G	12	3/4	9.5	35	22	22.8	22.0	42.7	16.0	52.8	32.0
SGMC - 16M - 6G	16	3/8	7.9	24	25	24.4	22.0	33.8	12.0	43.9	22.0
SGMC - 16M - 8G	16	1/2	11.9	27	25	24.4	22.0	38.9	14.0	49.0	26.0
SGMC - 18M - 8G	18	1/2	11.9	27	30	24.4	22.0	38.9	14.0	49.0	26.0
SGMC - 18M - 12G	18	3/4	15.1	35	30	24.4	22.0	42.7	16.0	52.8	32.0
SGMC - 20M - 8G	20	1/2	11.9	30	32	26.0	22.0	40.4	14.0	50.5	26.0
SGMC - 20M - 12G	20	3/4	15.9	35	32	26.0	22.0	42.7	16.0	52.8	32.0
SGMC - 22M - 12G	22	3/4	15.9	35	32	26.0	22.0	42.7	16.0	52.8	32.0
SGMC - 22M - 16G	22	1	18.3	41	32	26.0	22.0	45.2	18.0	55.3	39.0
SGMC - 25M - 12G	25	3/4	15.9	35	38	31.3	26.5	45.2	16.0	57.5	32.0
SGMC - 25M - 16G	25	1	19.8	41	38	31.3	26.5	47.8	18.0	60.1	39.0

\* See page 6 for Explanation of ISO Pipe Thread.

- Dimensions and Drawings are for reference only and are subject to change without prior notice.
- Unless otherwise specified, all dimensions are in millimeters.
- Sizes, pressure classes, and end connections not listed are available upon request.
- Dimensions shown with SUPERLOK nuts finger-tight, where applicable.