

HPFPDV1 Diaphragm Valves

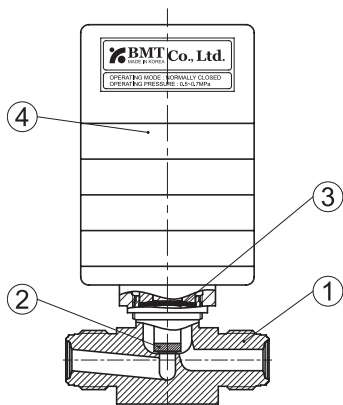
High Pressure Pneumatic Diaphragm Valves (High Flow Type) - N.C



Specifications

Size	1/2"
Cv Value	0.5
Orifice Size	6 mm
Max. Working Pressure (Positive Pressure / Back Pressure)	210 bar (3,045 psig)
Operating Pressure	0.5 ~ 0.7 Mpa
Max. Working Temperature	PCTFE: -10 ~ 40°C
Inboard Leak Test Rates (He) (Holding Time ≥ 15 sec.)	≤1x10 ⁻⁹ atm.cc/sec
Across the Seat Leak Test Rates (He) (Holding Time ≥ 15 sec.)	≤1x10 ⁻⁹ atm.cc/sec
Particle Inspection (EP Only)	No Count

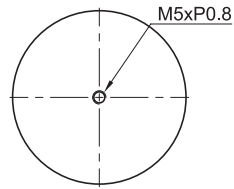
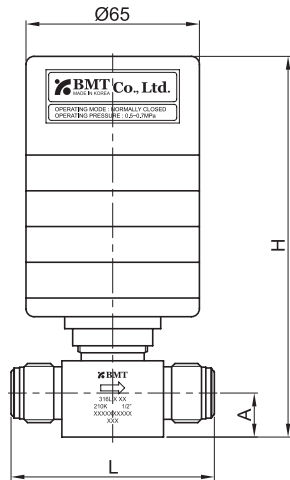
Material



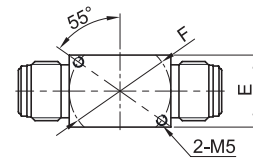
No.	Component	Material
1	Body	316L Stainless Steel
		316L Stainless Steel VAR
		304 Stainless Steel
2	Seat	PCTFE (<i>standard</i>) / PI
3	Diaphragm	Ni-Co Alloy
4	Actuator	Aluminium

*Dimensions and Drawings are for reference only and are subject to change without prior notice.

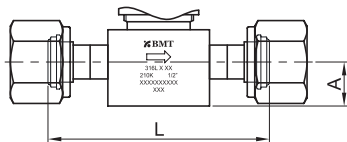
Dimensions



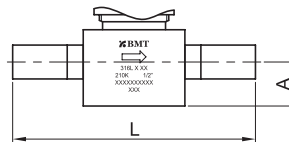
Top View



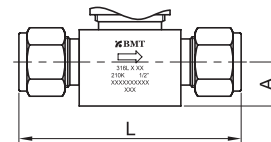
Bottom Mounting



Female BVC



Tube Butt Weld



SUPERLOK Tube Fitting

End Connection	Part No.	Dimensions (mm)				
		L	H	A	E	F
Male BVC	SMHPFPDV1C-VM8	76	142	16.5	27	38
Female BVC	SMHPFPDV1C-VF8	83	142	16.5	27	38
SUPERLOK Tube Fitting	SMHPFPDV1C-S8	81	142	16.5	27	38
Tube Butt Weld	SMHPFPDV1C-TW8	91	142	16.5	27	38

*Dimensions and Drawings are for reference only and are subject to change without prior notice.

Ordering Information

High Pressure Pneumatic Diaphragm Valves (High Flow Type) - N.C

*Additional configurations available upon request.

A	HPFPDV1	B	-	C	D	-	E	
DM	HPFPDV1	C	-	VM	8	-	P	

A Standard feature
E Optional

A	Materials
SM	316L Stainless Steel
DM	316L Stainless Steel VAR
4SS	304 Stainless Steel

B	Operation Method
C	Normally Closed
O	Normally Open

C	Connection Type
VM	Male BVC (BMT Vacuum Coupling)
VF	Female BVC (BMT Vacuum Coupling)
S	SUPERLOK Tube Fitting
TW	Butt Weld
VMXVF	In Male-Out Female

D	Connection Size			
	ASTM Tube			
	Designator	Nominal Size	Outside Diameter	Wall Thickness
	8	1/2 in.	12.7 mm	1.24 mm

E	Wetted Surface Grade	
	BA is standard. No part designator needed.	
	P	EP
	MP	MP
	AP	AP

Part Number Examples

	DMHPFPDV1C-VM8-P			SMHPFPDV1C-VF8-P	
Material	DM	316L Stainless Steel VAR		SM	316L Stainless Steel
Series	HPFPDV1	HPFPDV1 series		HPFPDV1	HPFPDV1 series
Operation Method	C	Normally Closed		C	Normally Closed
Connection Type	VM	BVC Male		VF	BVC Female
Connection Size	8	1/2"		8	1/2"
Flow Path		Omit for HPFPDV1 series			Omit for HPFPDV1 series
Seat Material		PCTFE (standard)			PCTFE (standard)
Grade	P	EP grade		P	EP grade

*Dimensions and Drawings are for reference only and are subject to change without prior notice.